

1. Document Overview

This document is currently under revision! We are producing a new release of *nowMessenger!* and this document is currently being update to reflect the new features, latest versions of Java and Java WebStart, and the release of *nowMessenger!* as a free application. Please bear with us while we make these changes.

This document covers the *nowMessenger!* application version listed in the page headers. Example screen captures are from a Linux system, windows screens may vary slightly, but due to the cross-platform capabilities of Java should not differ greatly. Since this is a Java WebStart application, the document is written to the latest version of the underlying Java environment.

Through out this document these conventions are used:

- GUI **button names** are shown in **boldface**.
- User `text entries` are shown in `fixed font`.

2. System Overview

nowMessenger! is a 100% Java text messaging client. Because the program is built using Java and uses the Java GUI framework, it is portable across all platforms in the enterprise. *nowMessenger!* uses the Simple Network Paging Protocol (SNPP) to directly connect to the paging service provider's paging network for prompt, reliable delivery of messages. Unlike most web-based or email alternatives directly accessing the paging network eliminates delivery delays due messages queueing in email or web buffers. Because *nowMessenger!* is internet based you no longer have to worry about modem compatibility. You can also send pages while your internet connection is up. No more 'logging-off' to send pages.

Since *nowMessenger!* uses your computer's internet connection you will need an ISP, or if you are on a corporate LAN, your network administrator will need to allow SNPP services to move freely through the firewall.

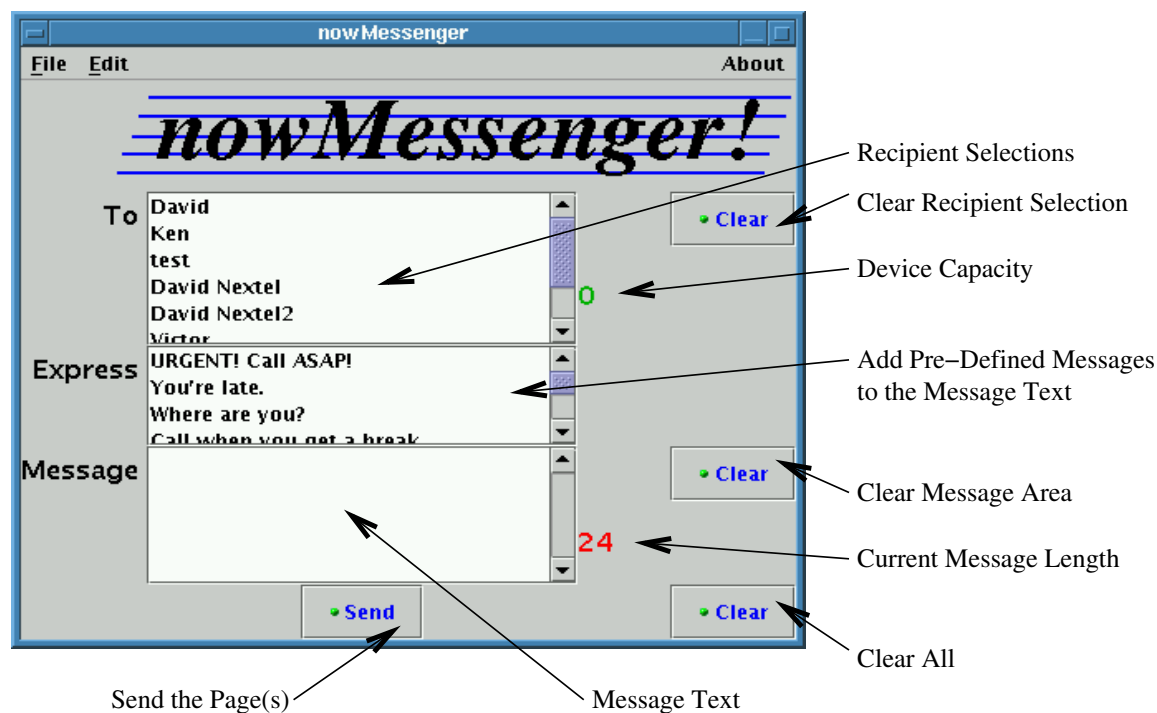
nowMessenger is operated via an intuitive Graphical User Interface. It is quite easy to operate the program without any additional documentation, but the following sections detail the program operations and provide some hints and tips for efficient use of this messaging tool.

3. nowMessenger! GUI Interface

nowMessenger! has an easy-to-use, intuitive Graphical User Interface (GUI). In general, the interface is designed so that operations that cannot be performed until sufficient input is provided are disabled. In other cases, a warning panel will display when additional input is required.

3.1 Main Application Window

When you launch nowMessenger! the main application screen opens. This is the screen you use whenever you send messages.

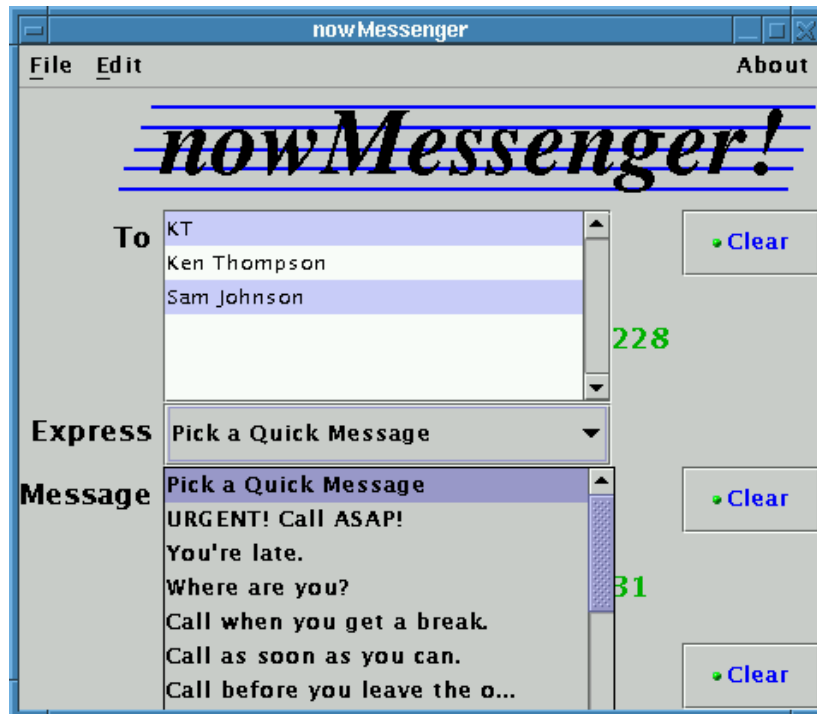


The major window items labeled in the figure above are:

- **To (Recipient List)** — this is your *address list* of people whose pagers you will be sending messages. Left-clicking on one of the entries in the recipient list selects that individual.
- **Device Capacity** — indicates the maximum number of characters that can be sent to the device held by the selected recipient. Depending on how you configured the selected recipient, this may be quite large and represent the message size than can be sent via multiple pages. When multiple recipients are selected, this number

indicates the smallest total message that can be sent.

- **Express** — predefined messages that append to the message text area. These can either be used as all or part of your message.

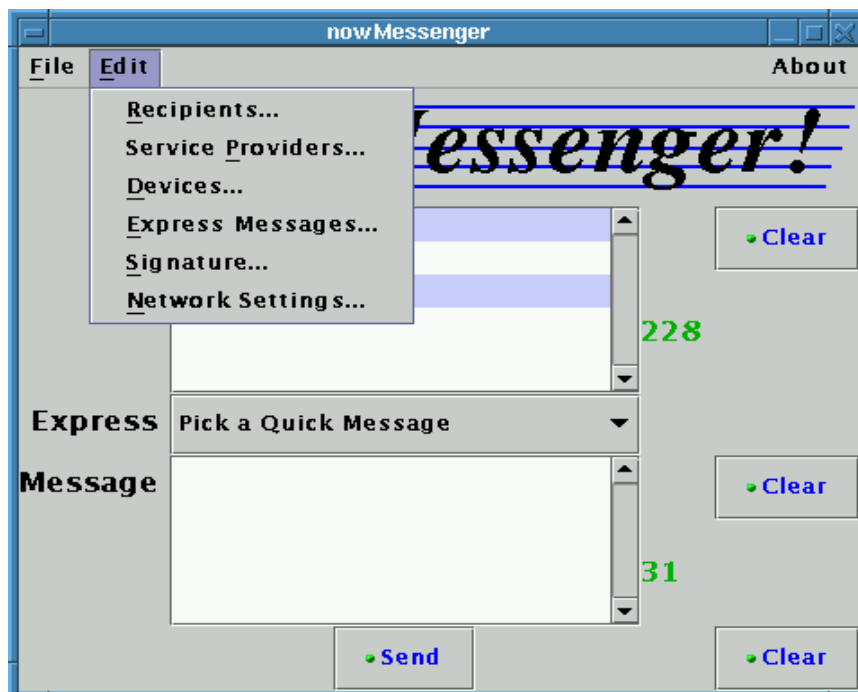


- **Message** — a buffer for entry of the message you will send to the recipient(s).
- **Current Message Length** — is an indication of the size of the message you are current composing. This is an approximation of what can actually be sent and is affected by how the message might be split across multiple transmissions. When messages are split, words will not be split so there may be some characters at the end of transmissions that are not used. Also, when you select multiple recipients each salutation may vary and the display will reflect the longest salutation amongst the selected recipients. As you approach the message limit the color will change from green to yellow to red. Green indicates that the entire message can be sent to all recipients, yellow means the message will be truncated for some but not all, and red indicates that the message exceeds the limit for all recipients.
- **Clear** buttons — allow you to clear recipient selections, message text or both.
- **Send** — connects to the provider hosts for the selected recipients and sends the message using as many pages as required.

Tips:

- When selecting multiple recipients if you hold down the `Ctrl` key while you left click and you will add that recipient to those already selected. If you hold down the `Shift` key while you left click you will add all recipients between the one clicked and the nearest selected in the list to those already selected.
- **Express** messages are added to the end of any text already in the message buffer—they need not be the first or the only part of the message.
- Since words are not split across multiple pages avoid using spaces in things you don't want split like phone numbers.
- Try to keep your most important information at the beginning of the message since total message lengths will vary when you send to multiple recipients. For example, it is better to write "*Please call before the end of the day, we need to discuss the issues ...*" rather than "*Sam called this morning and we need to discuss the issues [...] Please call me before the end of the day*".
- Recipients do not know that the others were to receive the same message. You may (or may not) want to include that in the message.

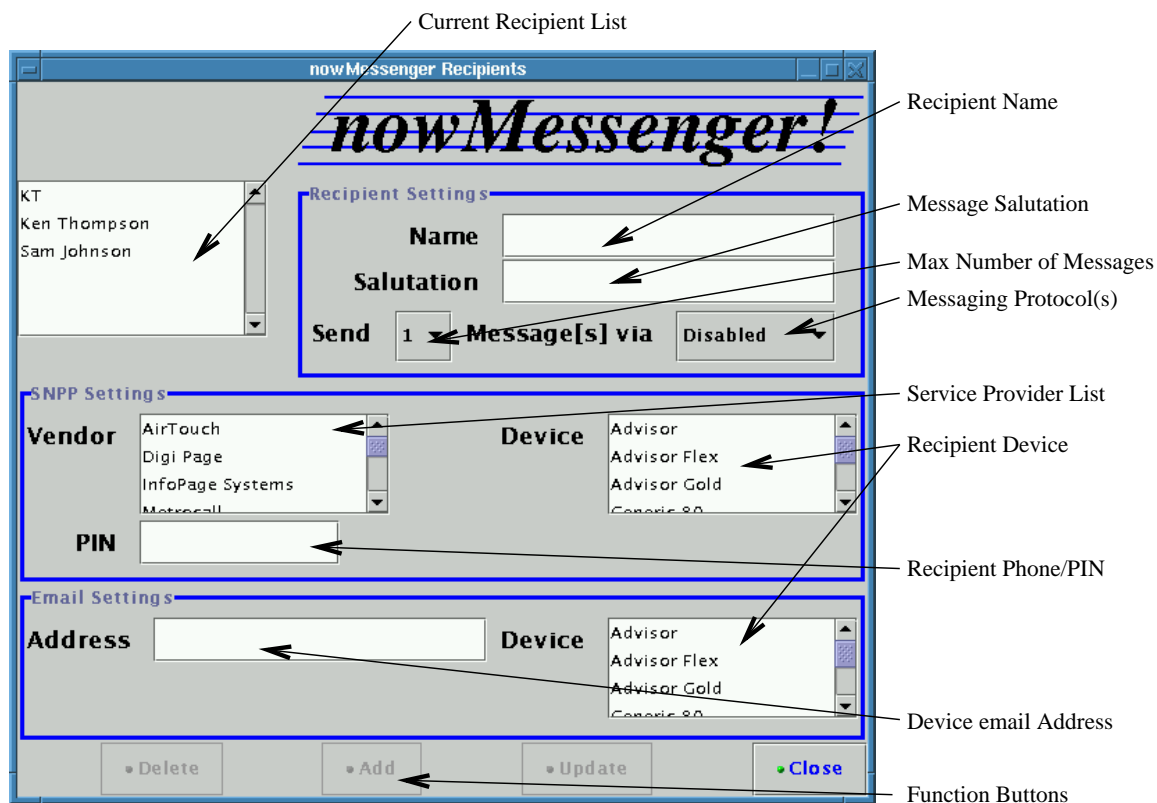
All of these features are under your control. You use the **Edit** pulldown menu at the top of the main screen to access configuration and management features.



- **Recipients...** — allows editing of your messaging *address* list.
- **Service Providers...** — you can add, edit or delete paging or messaging providers or update their information.
- **Devices...** — lets you manage the list of devices controlling the size of individual pages comprising messages.
- **Express Messages...** — you can add, edit or delete items on the **Express** message pull-down.
- **Signature...** — your personal information to be appended at the end of the message.

3.2 Recipients...

This screen allows you to add, modify and delete recipients.



The upper scrolling list displays the current recipients. Selecting one populates the remaining fields with the information for that recipient.

The **Recipient** is the name displayed in the list and in the recipient list on the main window.

The **Salutation** is prepended to your message before it is sent to this recipient. You must include any punctuation, including spaces, that separate the salutation from the message

body.

Paging companies *usually* assign a phone number to each pager and this is used when sending messages over the internet. Some companies use a single number and distinguish pagers via a **PIN**. You will need to know what unique pager identifier should be used. The individual recipient should know, or he can find out from his paging company.

The **Provider** selection list determines the internet address needed to send the message. If the provider is not on the list, you will need to add the provider before updating the recipient information.

Selecting a **Device** specifies the character size of the actual pager and controls the number of pages sent for a given message.

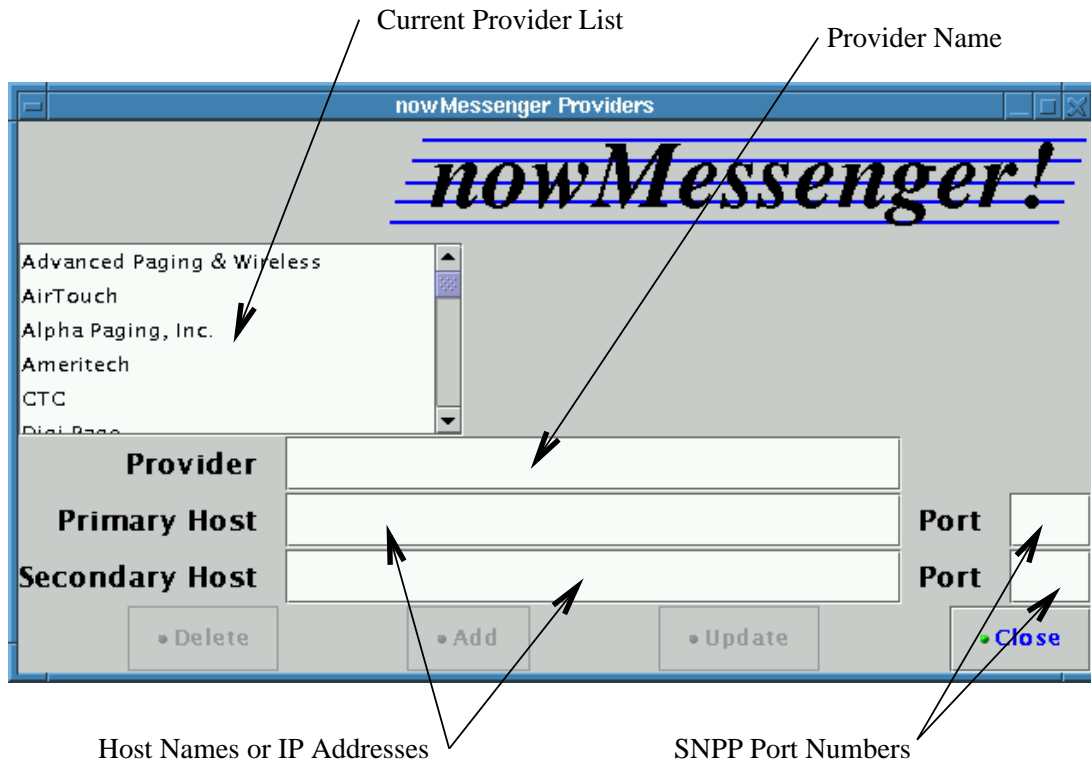
For each recipient you can set the total number of individual pages (**Messages**) that will be sent for one large message.

Tips:

- Select meaningful recipient names, especially if a single individual has more than one device or account.
- You may want to have multiple entries for the same recipient, where the **Salutation** or number of **Messages** differs.
- Use caution when setting the number of messages, especially when the device has small message limits. Very often these devices can receive and store a very limited total number of messages and you will quickly flood the recipient's pager.
- If you've begun adding or modifying an entry and realize the provider is not on the list, save your changes, add the provider (described below) and return to this screen to update that recipient.

3.3 Service Providers...

Each **Service Provider** (paging company) must have an entry before messages can be delivered using their services.



The upper scrolling list displays the current providers. Selecting one populates the remaining fields with the information for that provider.

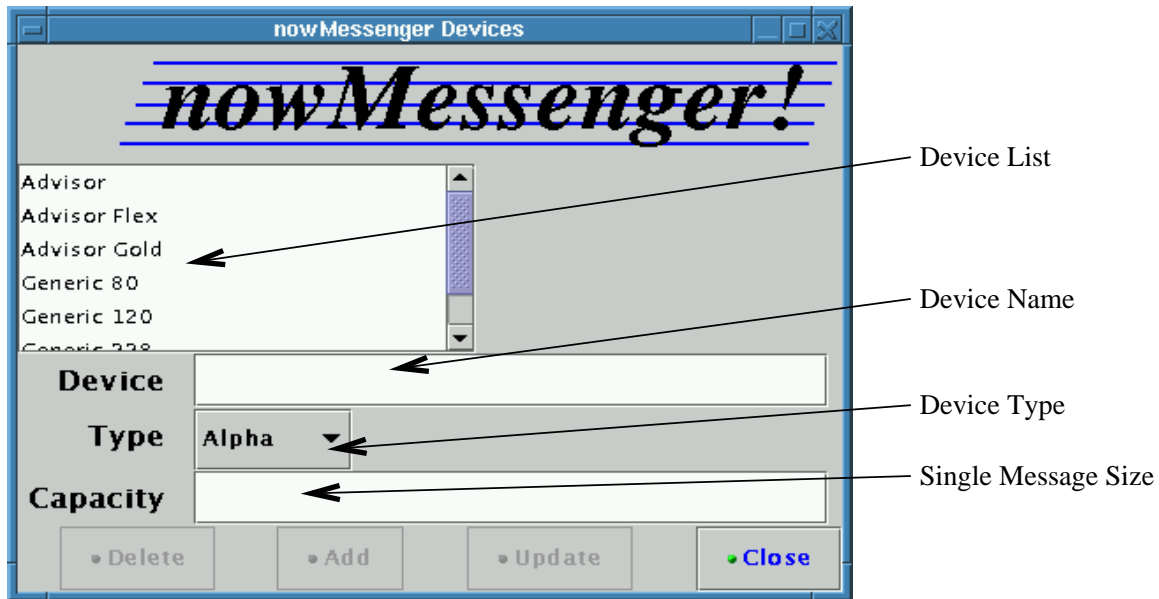
The **Provider** entry allows you to assign a meaningful name, usually the paging company name.

The **Address** is the network address of the paging company's SNPP host. This can be obtained from the paging company and is often posted on the company web site. This can either be a regular internet name, like `nois1.satellink.net` or an IP address like `192.168.1.21`.

The **Port** is the TCP/IP port number the paging company uses for SNPP services. The default port specified by SNPP is 444.

Different messaging devices have various capacities and capabilities that affect how *nowMessenger!* sends messages to the device.

3.4 Devices...



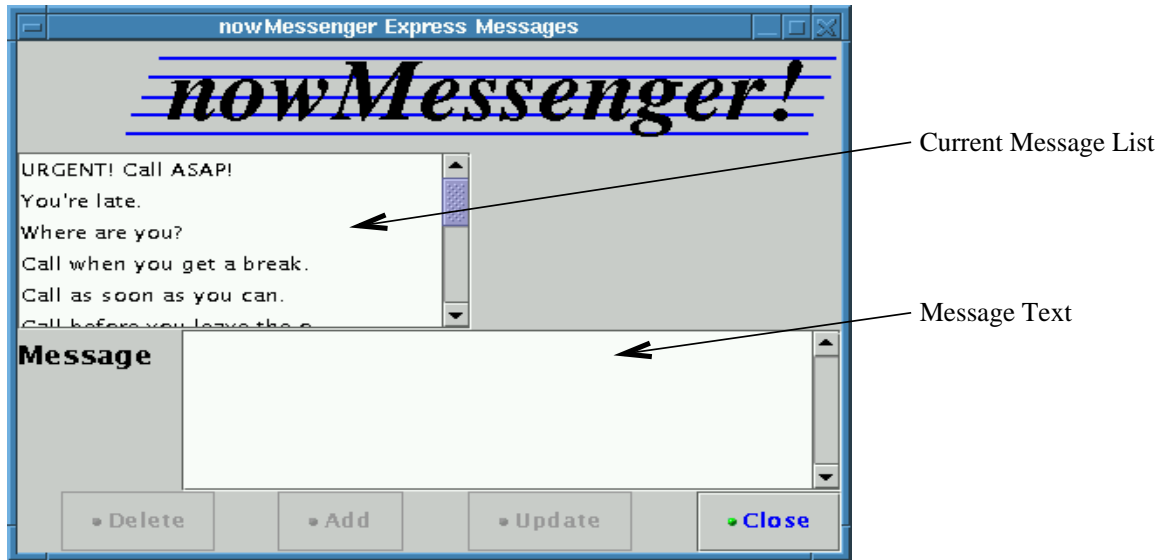
The upper scrolling list displays the current devices. Selecting one populates the remaining fields with the information for that device.

The **Device** name should be the model number, being careful to note seemingly minor differences in names.

Type is either *alpha* or *numeric*. Alpha pagers can display letters of the alphabet and numerals and numeric pagers display only numerals.

Capacity refers to the maximum number of characters the device can accept in a single page. Some alpha pagers handle hundreds of characters per page while numeric pagers often have a capacity of 12 to 24.

3.5 Express Messages...



The upper scrolling list displays the current **Express** messages. Only the first part of the message is displayed. Selecting one populates the text area with the entire **Express** message.

The **Message** text can be modified, or the entire message deleted, updating the list accordingly.

Tips:

- Since **Express** messages append to the message buffer, you can create **Express** messages that are commonly used phrases rather than entire messages.

3.6 Signature...

A **Signature** is text that is added at the end of every outgoing message, truncating the message as necessary to append the **Signature**.



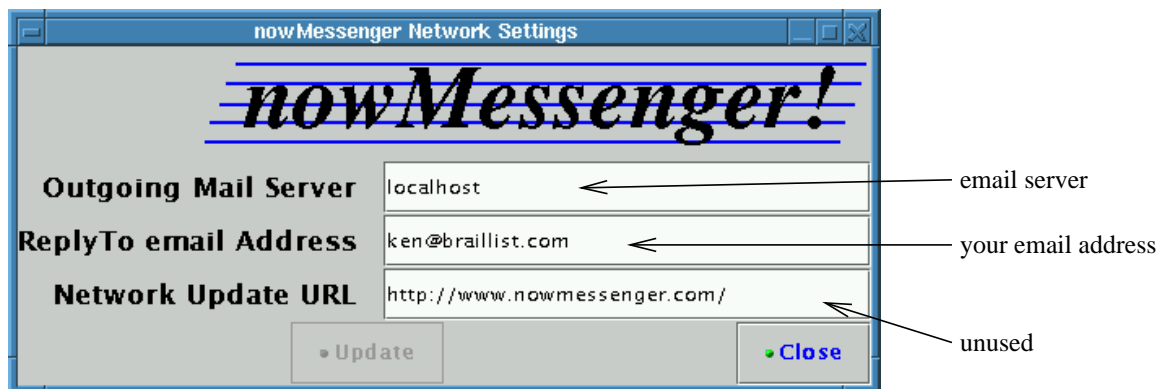
Your current **Signature** text is displayed in the text window.

Tips:

- To avoid having your signature split across pages use periods ('.') instead of spaces.
- If many of your recipients have low capacity pagers you should keep your signature to a minimum.

3.7 Network Settings...

Network Settings control how email is sent to communication devices and how these might respond if they are two-way devices.



The Outgoing Mail Server is the same as your email client would use to send email to the internet. The ReplyTo address will be included with any wireless messages delivered by email and should be an address where you receive your mail. If one of the email devices is a two-way device, the recipient may respond to this email address.

4. *Upgrading Issues*

4.1 *For users upgrading from Java 1.4 (or below) to Java 1.5*

The Java WebStart delivered with JDK 1.5 places *muffins* in a different location than previous JDK releases. To retain any previous settings you will need to copy the *nowMessenger!* cookies to the new location.

On Linux/UNIX the original muffins are located in:

```
~/javaws/muffins/http/Dwww.nowmessenger.com/P80/DInstall/
```

and in JDK1.5 they are in:

```
~/java/deployment/cache/javaws/muffins/http/Dwww.nowmessenger.com/P80/DInstall/
```

Copying the files from the original location to the new location will restore your settings.

CONTENTS

1. Document Overview	1
2. System Overview	2
3. <i>nowMessenger! GUI Interface</i>	3
3.1 <i>Main Application Window</i>	3
3.2 <i>Recipients...</i>	6
3.3 <i>Service Providers...</i>	8
3.4 <i>Devices...</i>	9
3.5 <i>Express Messages...</i>	10
3.6 <i>Signature...</i>	11
3.7 <i>Network Settings...</i>	11
4. <i>Upgrading Issues</i>	12
4.1 <i>For users upgrading from Java 1.4 (or below) to Java 1.5</i>	12